



HELLO BODY

全球版家用优立塑



HELLO BODY

全球版家用优立塑
操作使用手册

- 感谢您购买公司仪器
- 请仔细阅读使用说明书并正确使用
- 在使用前请务必阅读“注意事项”和“禁忌人群”
- 说明书请妥善保管



好莱坞国际名模 (Bor1柏丽)



HELLO BODY

全球版家用优立塑

catalog

产品形象	P. 18-19	PRODUCT IMAGE	P. 01-02
产品简介	P. 20-21	PRODUCT INTRODUCTION	P. 03
注意事项	P. 21	NOTED	P. 04
禁忌人群	P. 21	TABOO	P. 04
仪器介绍	P. 22	OPERATION INTERFACE	P. 05
安装步骤	P. 23	INSTRUMENT INTRODUCTION	P. 05
操作界面	P. 24	INSTRUMENT PROCEDURE	P. 06
仪器使用步骤	P. 25-26	OPERATION INTERFACE	P. 07
操作手法	P. 27-28	USAGE STEPS	P. 08-09
仪器参数	P. 29	OPERATION METHOD DIMENSIONAL	P. 10-11
常见故障及排除	P. 29	TECHNICAL SPECIFICATION	P. 12
仪器保养	P. 30	COMMON FAULTS AND TROUBLESHOOTING	P. 12
配件清单	P. 31	MAINTENANCE	P. 13
仪器证书	P. 32	ACCESSORIES	P. 14
保修卡	P. 33-34	CERTIFICATES	P. 15
		WARRANTY CARD	P. 16-17

01



Boo
好莱坞国际名模 (Boo柏丽)

HELLO BODY

全球版家用优立塑



02

I. PRODUCT INTRODUCTION

Introduction

Hello body , with the advanced technology of balanced energy scan tech , Accurate and uniformed works on the area of 40mm*60mm. The ultrasound works exactly and evenly on the large energy emission port to a chieve large are a coverage. The energy output is symmetrically and balanced so as to get the high efficiency and accurate effect.

II. NOTED

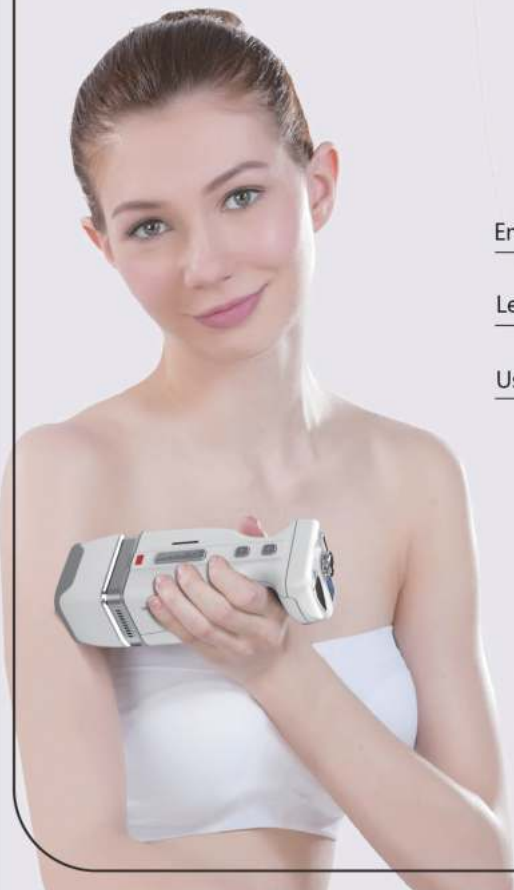
1. Bathing is not allowed within 4 hours after treat ment.
2. Hot water bathing is not allowed within 24 hours after treatment
3. Drink as much water as you can after treatment , do drink 8000 cc or more water everyday.
4. Keep exercises at least 10-15 minutes every day , the best choice is jog and Aerobic exercise, stay in good mood.
5. Keep diet mainly light, eat and drink too much is not allowed, eat less sweet food and carbonated drinks, eat more vegetables fruits, maintaining nutritional balance.



III. TABOO

1. People with Head and neck fat depths less than 8mm are not allowed to use.
2. Women who are in physical period (abdomen not allowed), beast feeding period and prepare pregnant period are not allowed to use.
3. Body buried with metal , plastics , silicon around are not allowed to use.
4. Body Buried in hearing aid , a pacemaker such medical devices are not allowed to use.
5. People with abnormal fat metabolism, including severe hyperlipid-emia and severe fatty liver supply are not allowed to use.
6. People with liver damage or abnormal liver function index, abnormal coagulation function or serum drug users are not allowed to use.
7. People with skin allergies or inflammation, with sensitive skin or with skin infection are not allowed to use.
8. People use anticoagulant polymetric drugs presistnetly, such as: Non-steroid anti-inflammatory drugs, oral contraceptives, hormone drugs are not allowed to use.
9. People below 12 years old and who have irrational expect-ant for beauty effect are not allowed to use.

IV. OPERATION INTERFACE



V. INSTRUMENT INTRODUCTION



VI. INSTRUMENT INTRODUCTION

1. Take out the handle, gem and power cord;
2. Connect the power cord with the handle;
3. Put on a layer of gem or special cream on the body area to be operated;
4. Test and adjust the energy through the buttons on the handle;
5. Start your operation.

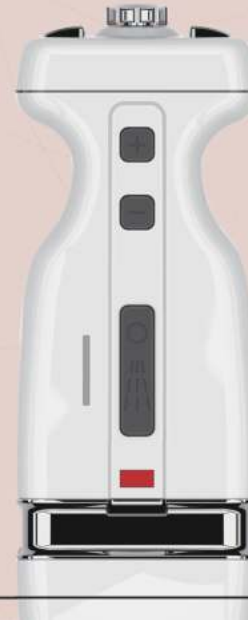


VII. OPERATION INTERFACE

1. Connect the power line and then the instrument starts up. The energy can be adjusted by the keys "+" and "-". When pressing down the button "+", the energy will be increased while if pressing down the button "-", the energy will be reduced. Below the keys "+" and "-", there is an energy emission key. If it is pressed down, then the machine will start working.

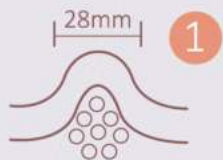


2. The rotary knob can be used to adjust the treatment depth. The energy ranges from 1 to 9, which shall be adjusted according to the customer's endurance capability.

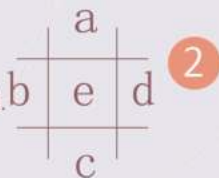


VIII. USAGE STEPS

1. Measure the operated part that should be over 28mm, record down the data.



2. Mark the operated part with square grid.



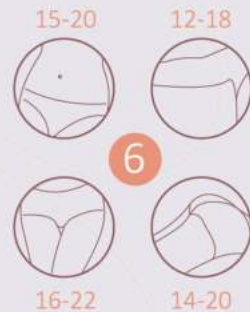
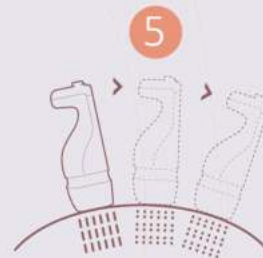
3. Connect the power cord, smear gel on skin and then operate for about 1 hour.



4. Press the button adjust the energy output, rotate the button to adjust the depth.



5. The head should be kept close touch with the skin, fixed the head in one position when working. Move the head to the next part and repeat the same treatment after the shooting finished.



6. Abdomen: 15-20 shots/session
Buttock : 14-20 shots/session
Thigh : 16-22 shots/session

7. It is normal that slight discomfort may be happened after operation (like, redness, swelling, congestion). The best result could be seen after 8-12 weeks. This is also the needed time for the body to metabolize the destructive fat.

7
8-12
weeks

PS

As it is non invasive treatment, there is no need recovery time, and it won't influence the daily life.

IX. OPERATION METHOD DIMENSIONAL



measurement shall be made for the part to be operated before the treatment.

1

Then the gem or special scream shall be put on the body area to be operated. In the case of abdominal operation, the first shot should be given from the position above the hipbone and then the following shots should move towards the navel.

2



During the operation on the arm, the technique from down to up can be applied. Besides, the operated area should be cleaned immediately after treatment.

3



The leg should be operated from the outer side to the inner side and the operation width is about three lines as the picture.

4



5

Operation on hip shall be started from the thigh root and then moved upwards. The operation width is also about three lines as the picture.



6

In the case of side-waist operation, the probe should be placed on the upper side of the sacrum for preparation, and then the operation is supposed to be started from the position about a fist away the spine. The operation width is also about three lines as the picture.



7

Dimensional measurement on the same area shall be made once again after operation. (Make sure that the measurement area is the same as the area previously measured).

PS

During the operation, be sure to keep the probe closely clinging to the skin and moving ceaselessly. The start button cannot be pressed down until the probe is confirmed to be tightly clinging to the skin and the probe should be held steadily without any free slide in the whole course. One more point, appropriate depth for different treatment areas should be adjusted well before operation.

X. TECHNICAL SPECIFICATION

PRODUCT : HELLO BODY	FREQUENCY : 4MHZ
MODEL NO: H-028S	DEPTH : 0.8CM-1.3CM
POWER : AC 110V-220V	MACHINE SIZE : 68*68*198MM
50HZ-60HZ	PACKAGE DIMENSION : 525*343*432MM
OUTPUT POWER : 24W	WEIGHT : 1.0KG

XI. COMMON FAULTS AND TROUBLESHOOTING

FAULTS

No react when turn on power

Head' s water leaking

TROUBLESHOOTING

To check if there is electricity in socket,change other socket to have a try.

Stop using it, change the plastic cover or return back the machine to the manufacturer.

Please note :

This machine is precision instrument and it is forbidden to be used in the humid environment such as bathroom. Please stop using it and return back to the manufacturer once it gets into water.

XII. MAINTENANCE

1. Be sure to use plug with ground pins and be sure the instrument power socket has been really grounded before the use of the instrument.
2. Ensure the instrument power is adaptive, if local power supply is unstable, we suggest user should increase stable power supply with matching power.
3. This instrument is not allowed to put in a humid place or near the water source and it is also not allowed to be directly exposed to a sunlit place.
4. Do not put the instrument to the strong heat source body or it would probably effect the service life and normal use of the instrument.
5. For treatment course efficacy of the instrument and to ensure normal service life, please wholly use the specified accessories provided or recommended by original manufacturer.
6. We suggest to use the machine with its 'supplementary products by the manufacturer , please consult the manufacturer before purchasing the Non-manufactured products.
7. After use, timely clean instrument and cut off power.
8. Keep the instrument in dry place when not using it.

XIII. ACCESSORIES

	MAIN BODY	1		INSTRUCTION	1
	POWER CABLE	1		WARRANTY CARD	1
	STICKER	2			

XIV. CERTIFICATES



XV. WARRANTY CARD

TO THE USER

Many thanks for your support and trust!

HELLO BODY can be performance excellent under normal use and maintenance
Within one year from the purchase date, any damage to the instrument due to manufacturing processes or components, free maintenance. Lifelong technical support.

Terms of Warranty

1. Warranty 365 days, start from the purchase date.
2. Please show proof of purchase or purchase record to apply warranty from the seller
3. Exceeds the warranty period, all repair parts are charged according to price
4. Not free warranty as belows cases
 - 1) Disassemble handle and body case. Improper operation
 - 2) Failed to provide proof of purchase or purchase records

MODEL

PURCHASE
DATE

NAME

TEL

FAULT
DESCR-
IPTION